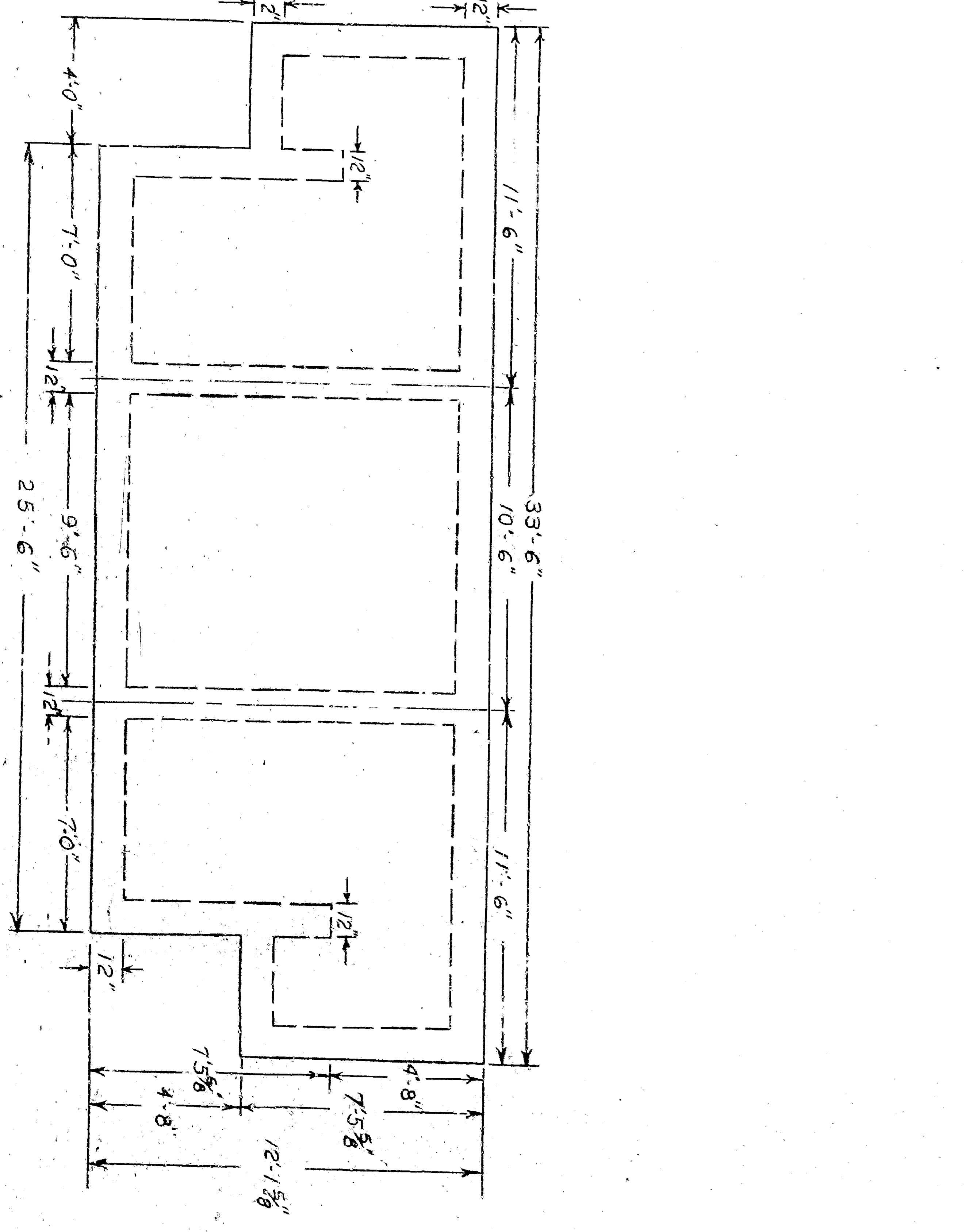
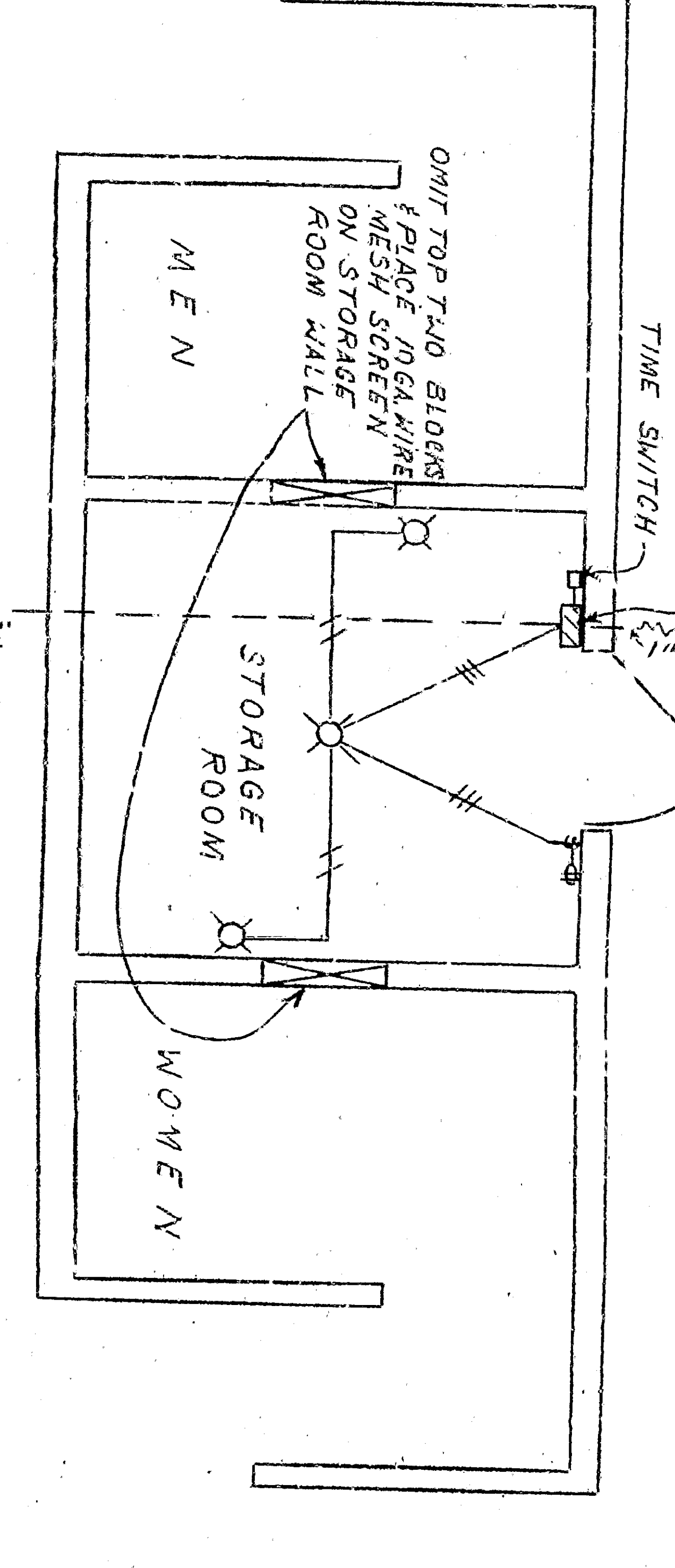
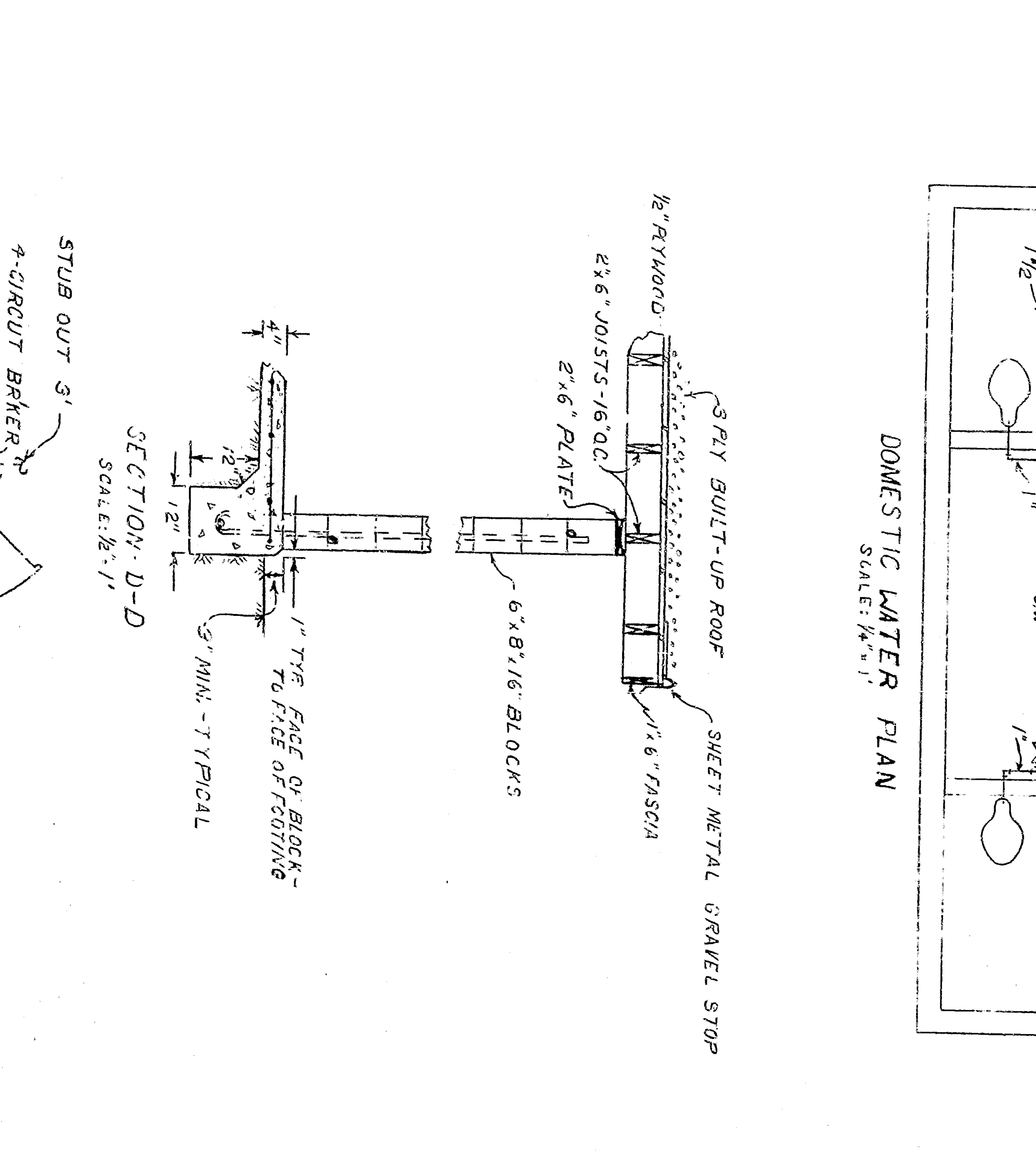
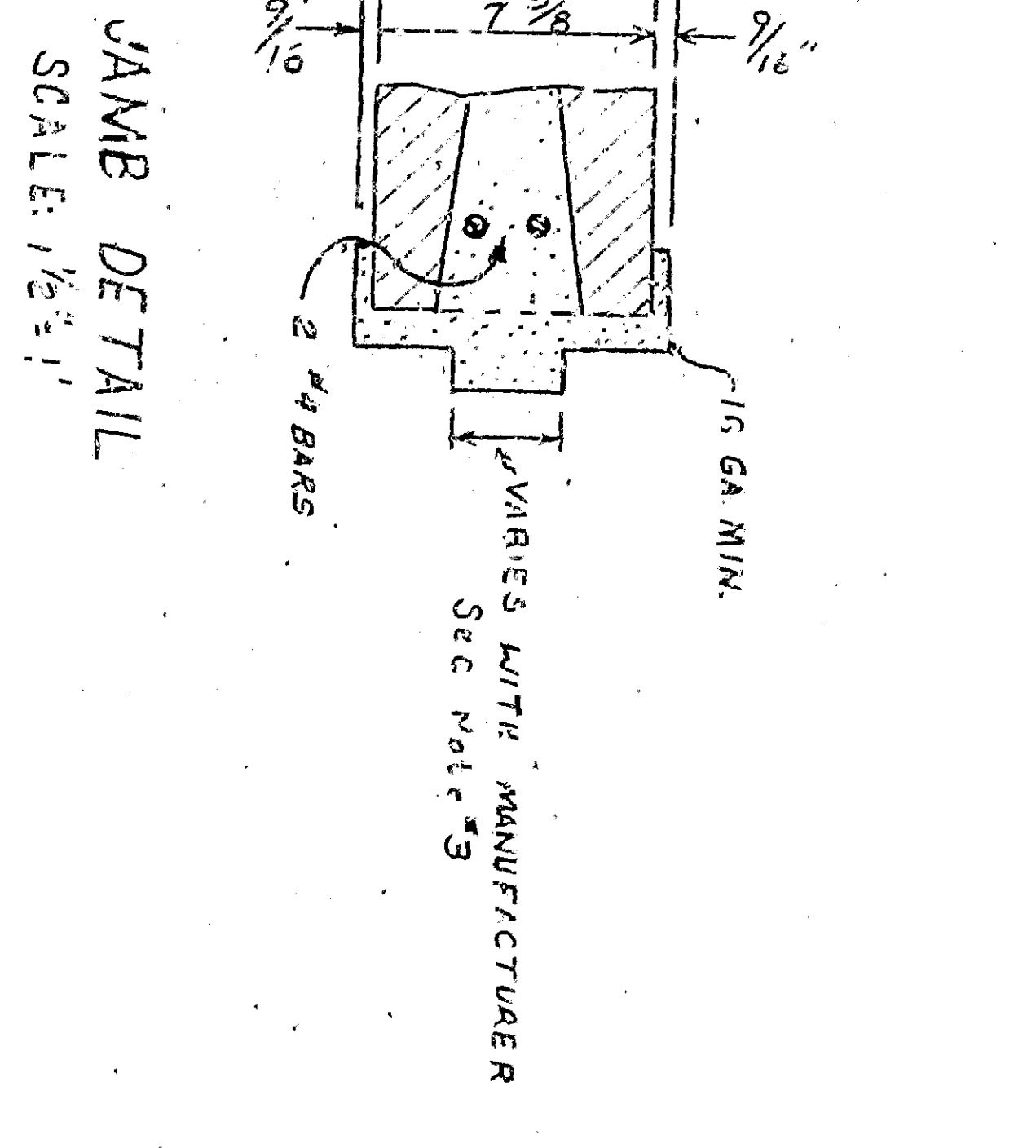
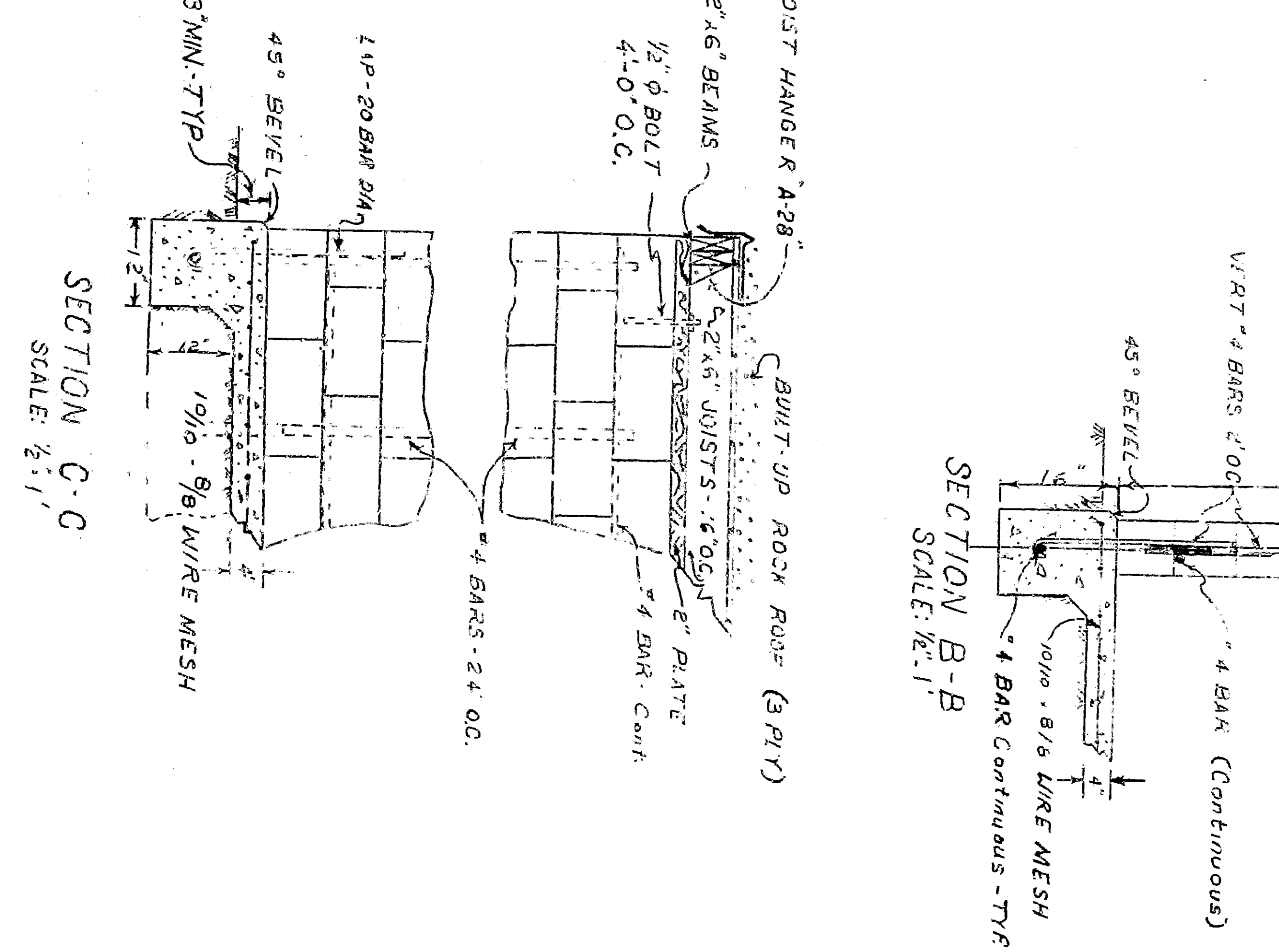
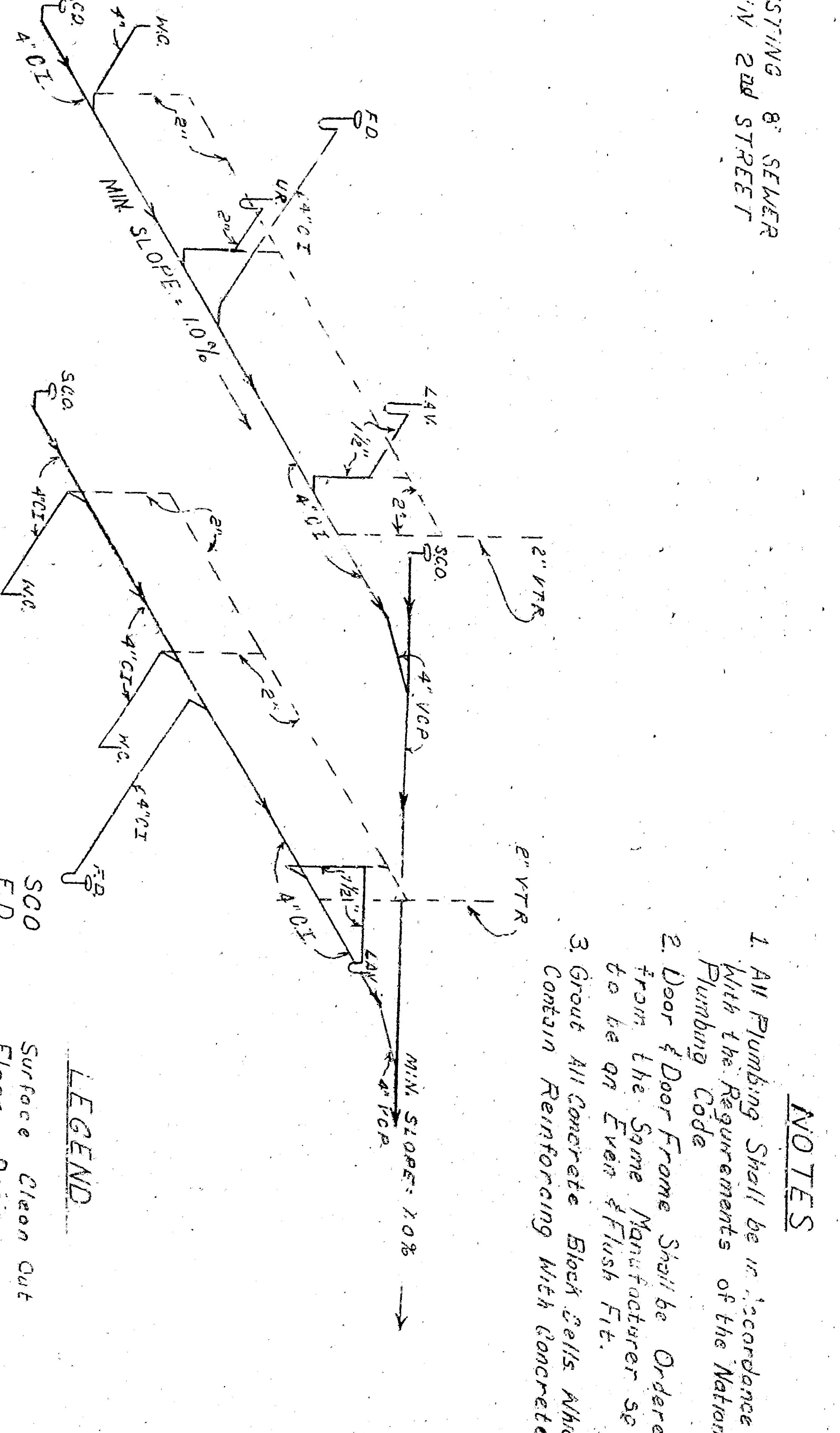
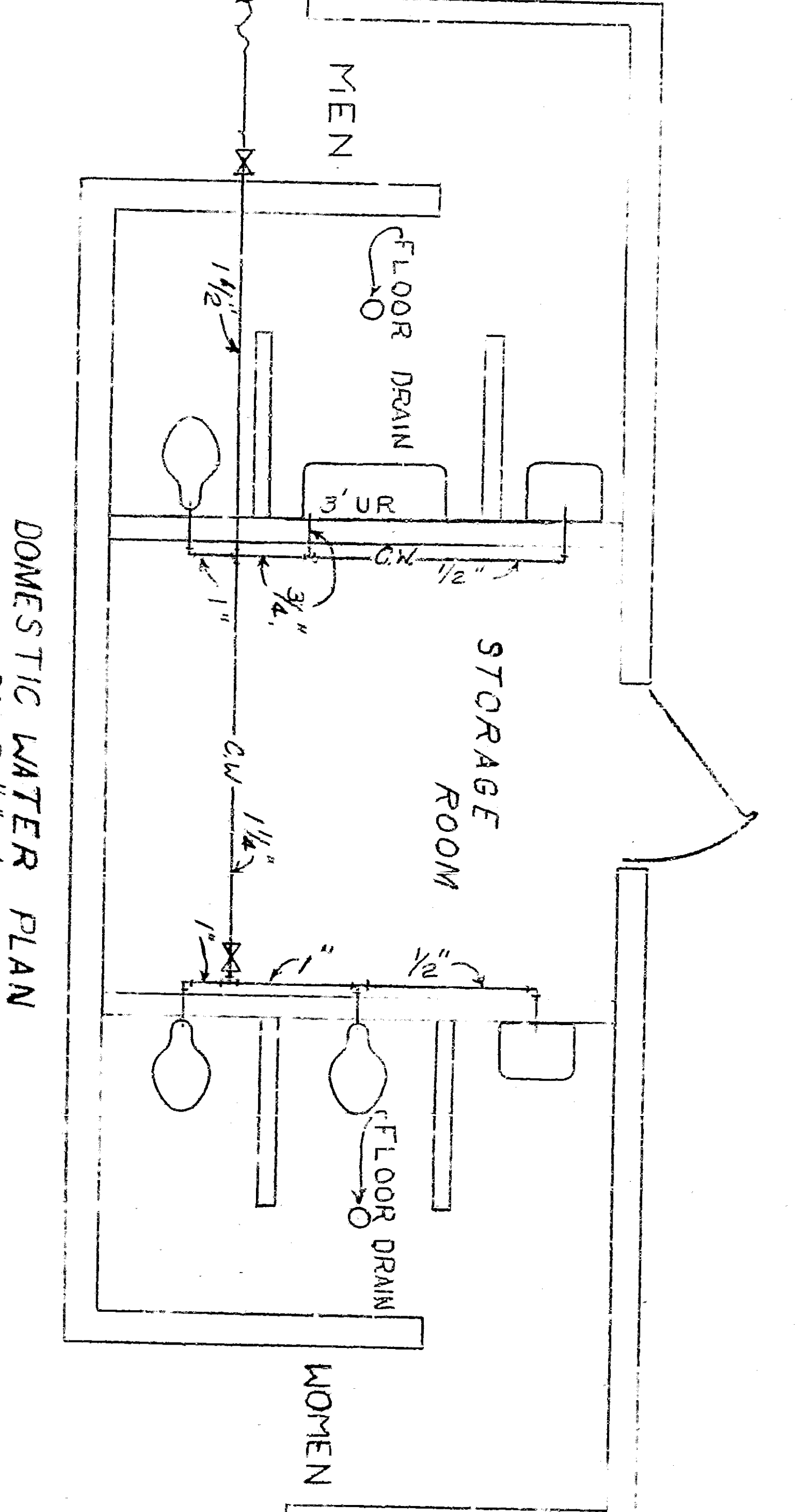
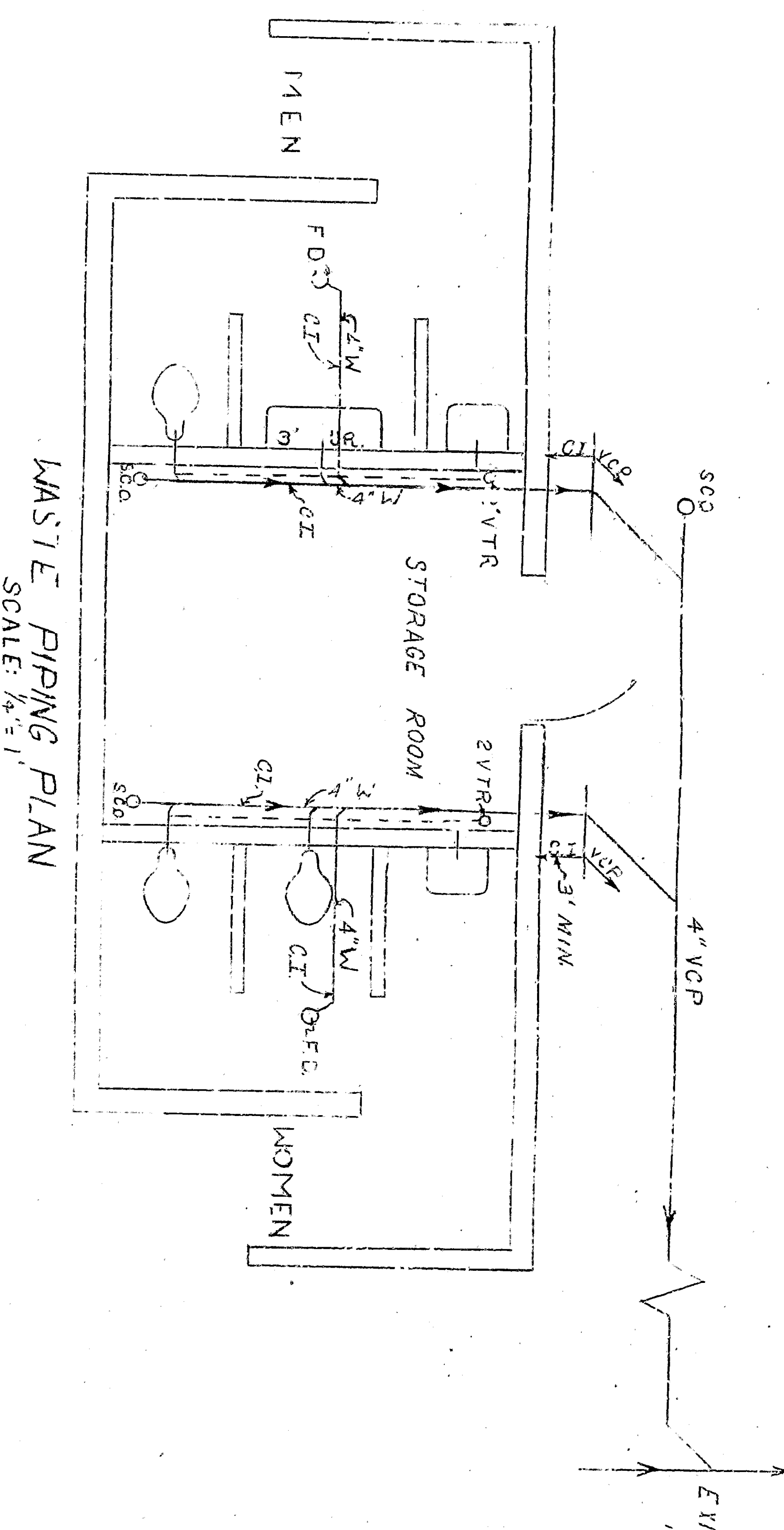
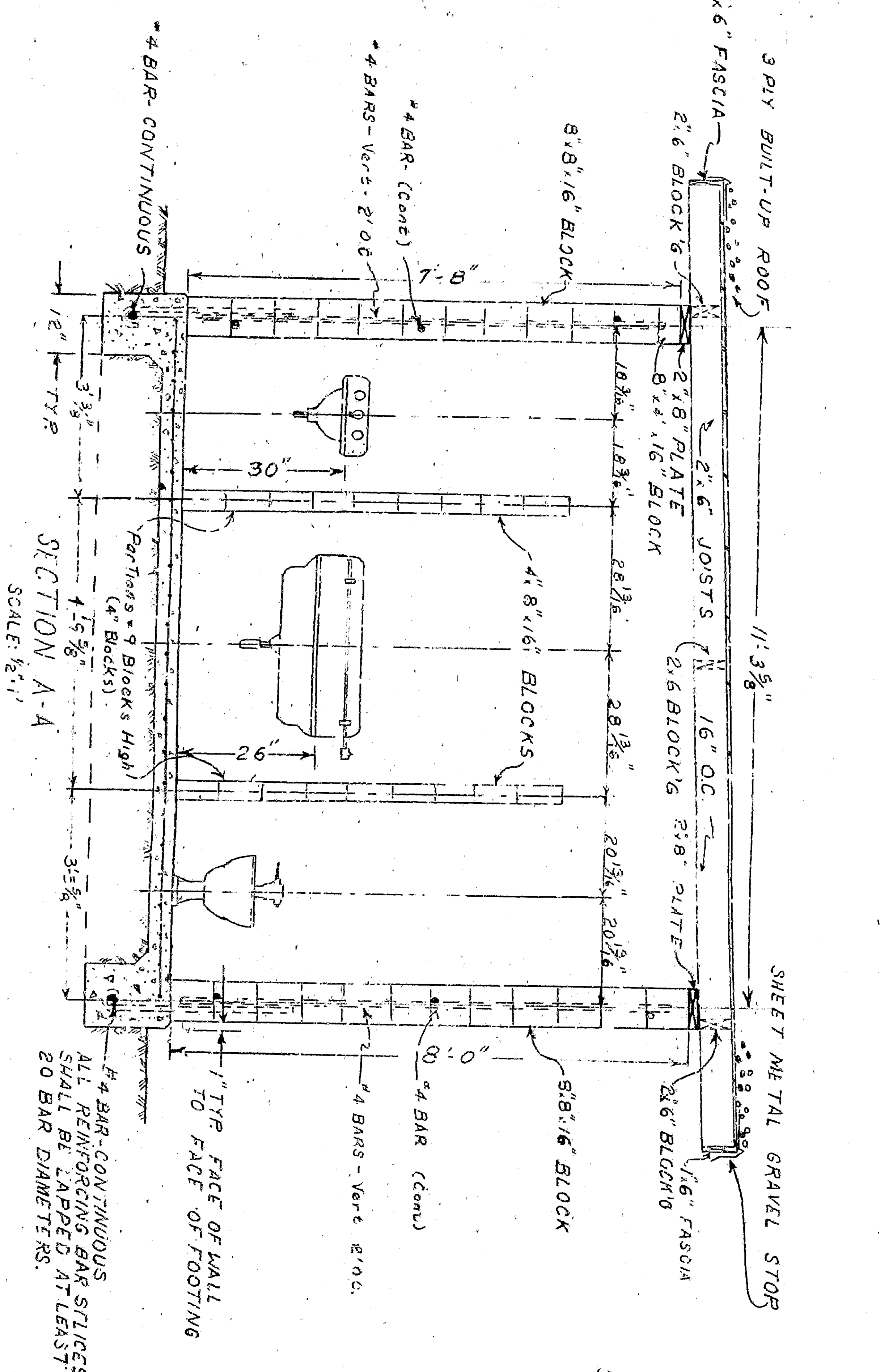
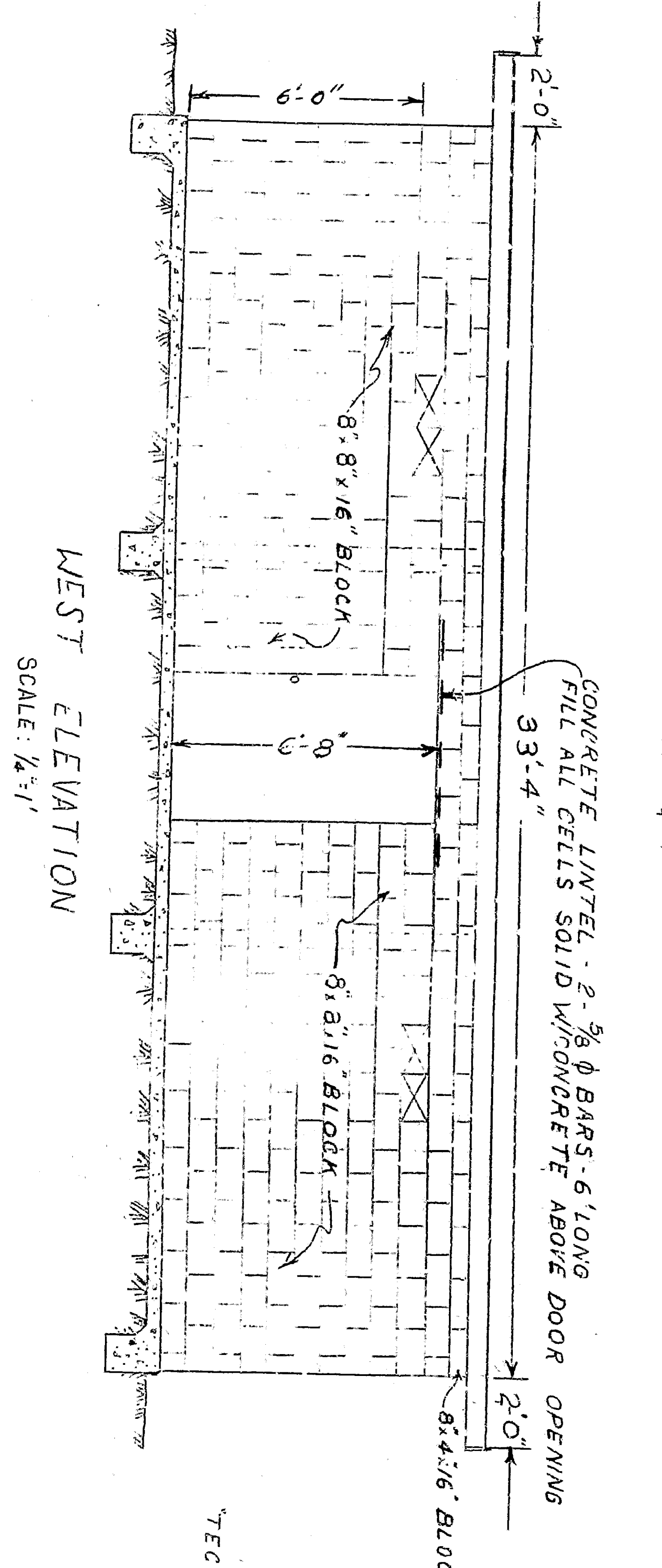
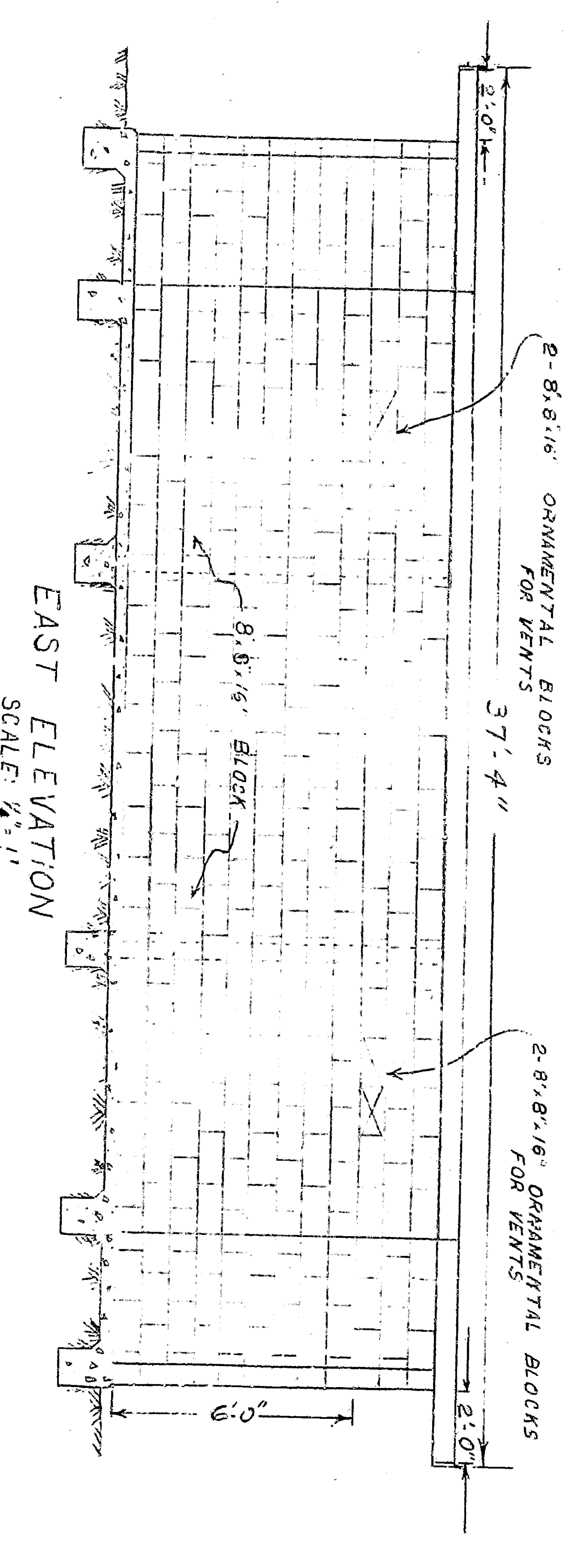
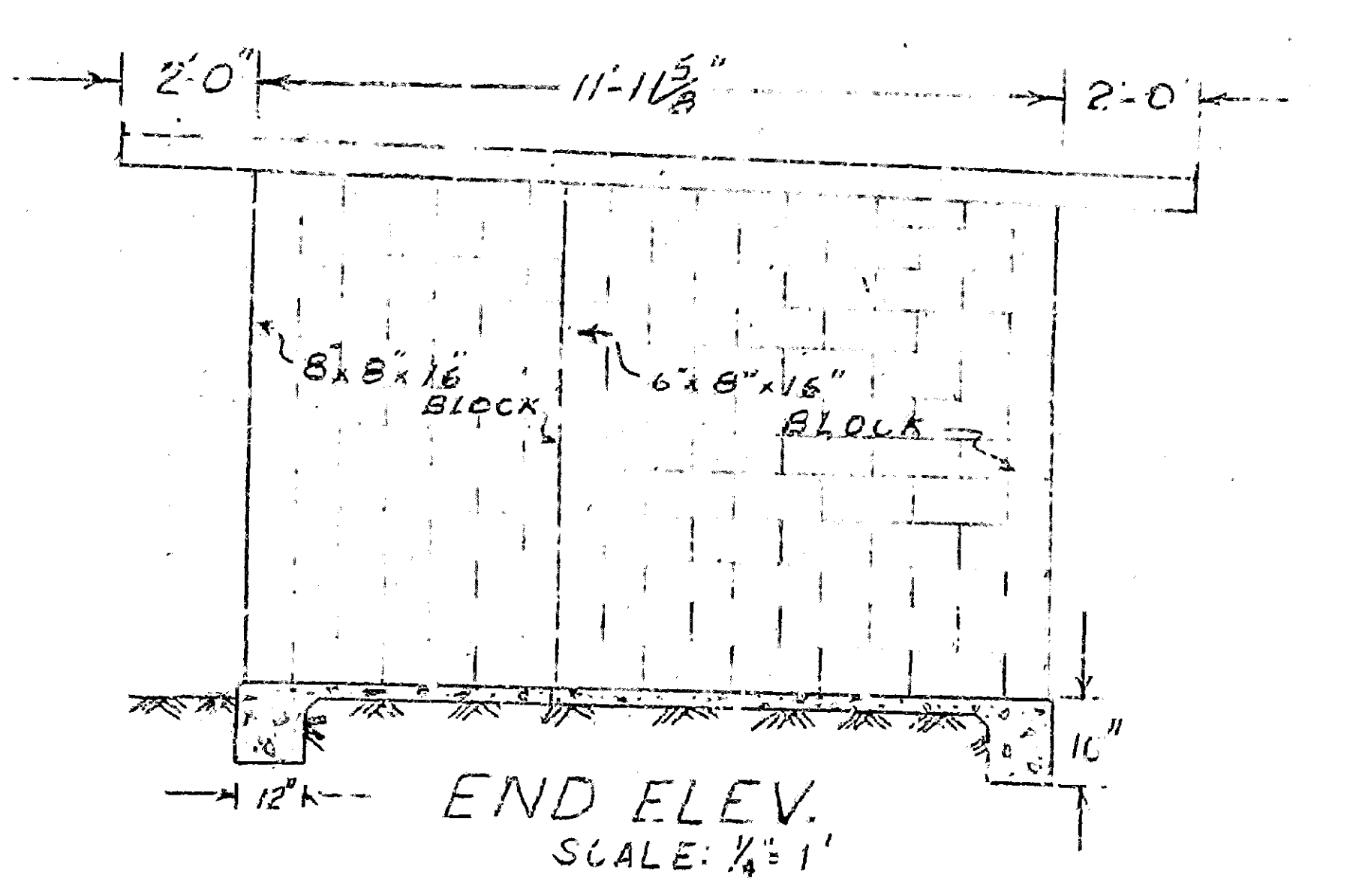
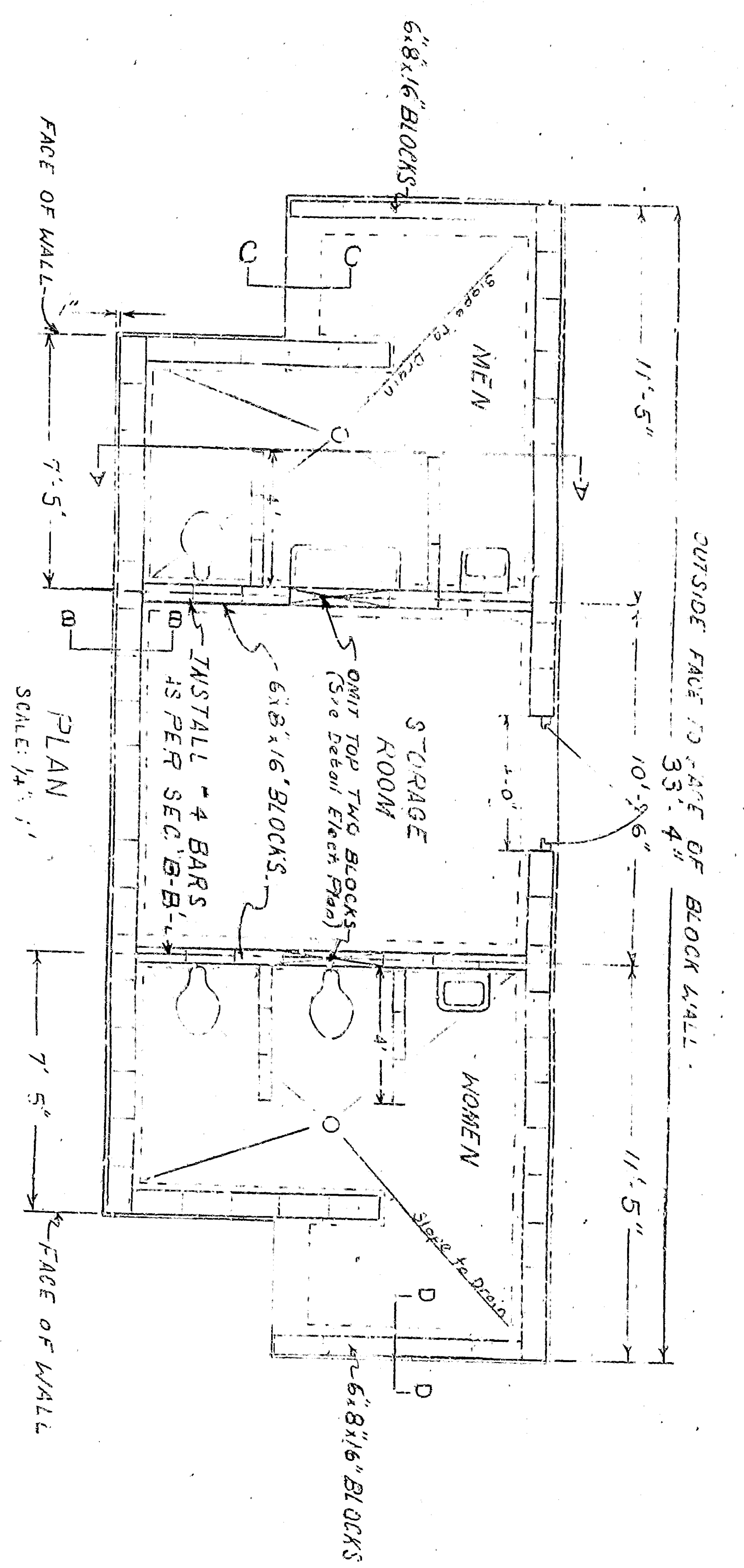


- LEGEND**
- SCD Surface Clean Out
 - FD Floor Drain
 - LD Lavatory Drain
 - WC Water Closet
 - VTR Vent Through Roof
 - UR Urinal
 - Waste Line
 - Waste Line
 - CW Cold Water
 - TI Trip
 - CTO Cast Iron
 - VC Vent
 - VC Vent
 - VC Vent

- NOTES**
1. All Plumbing Shall be in accordance with the Requirements of the National Plumbing Code.
 2. Door & Door Frame Shall be Ordered from the Same Manufacturer as to be on Even # Flush Ft.
 3. Grout All Concrete Block Cells Which Contain Reinforcing with concrete.

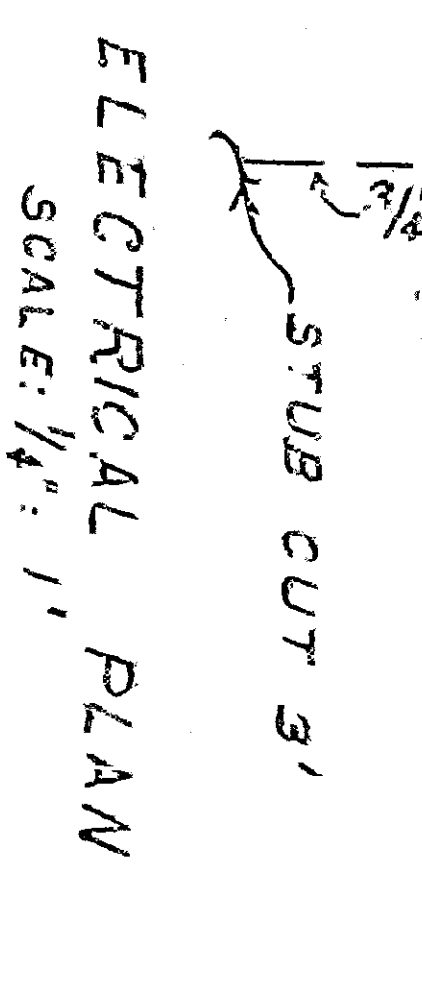
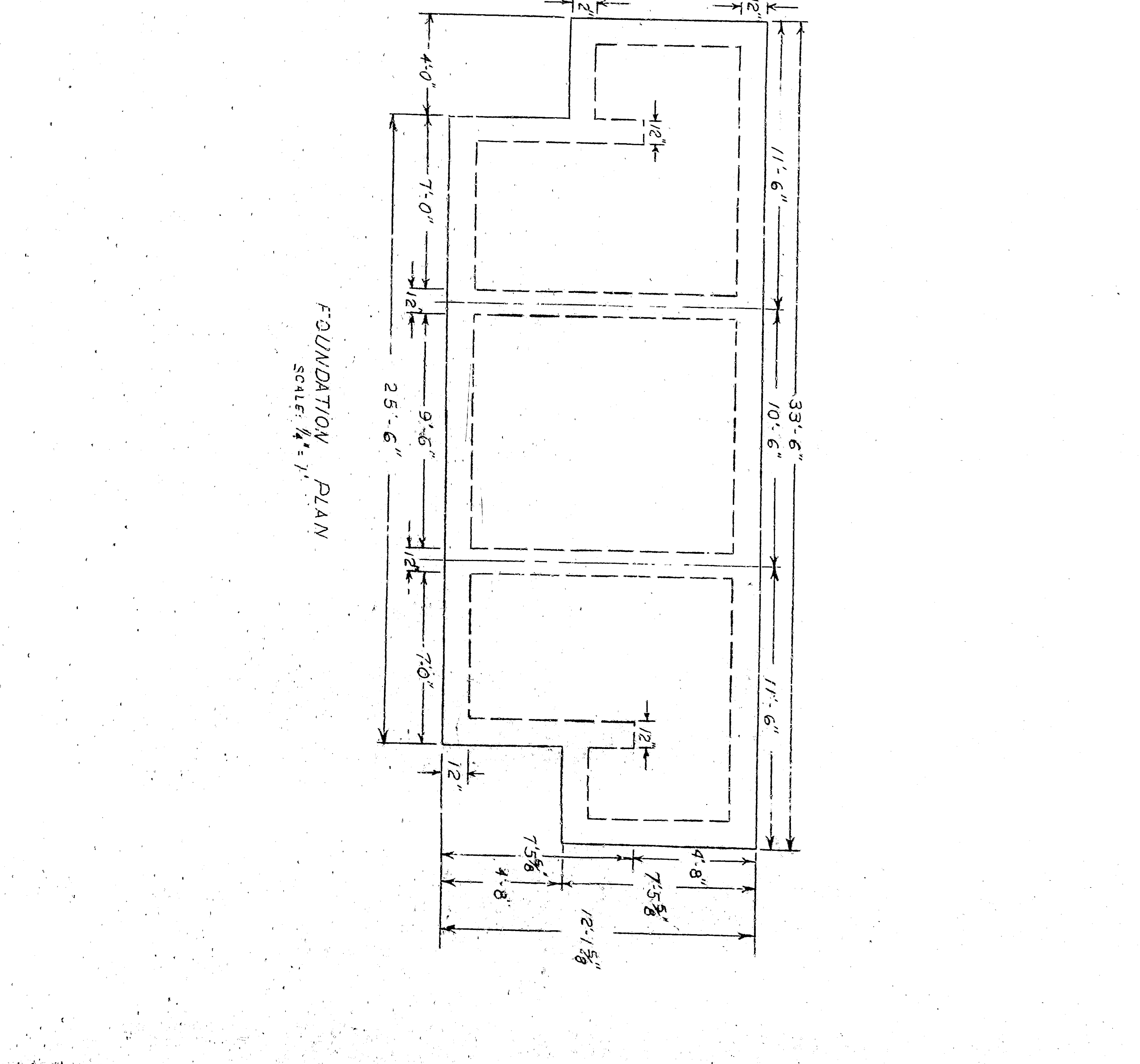
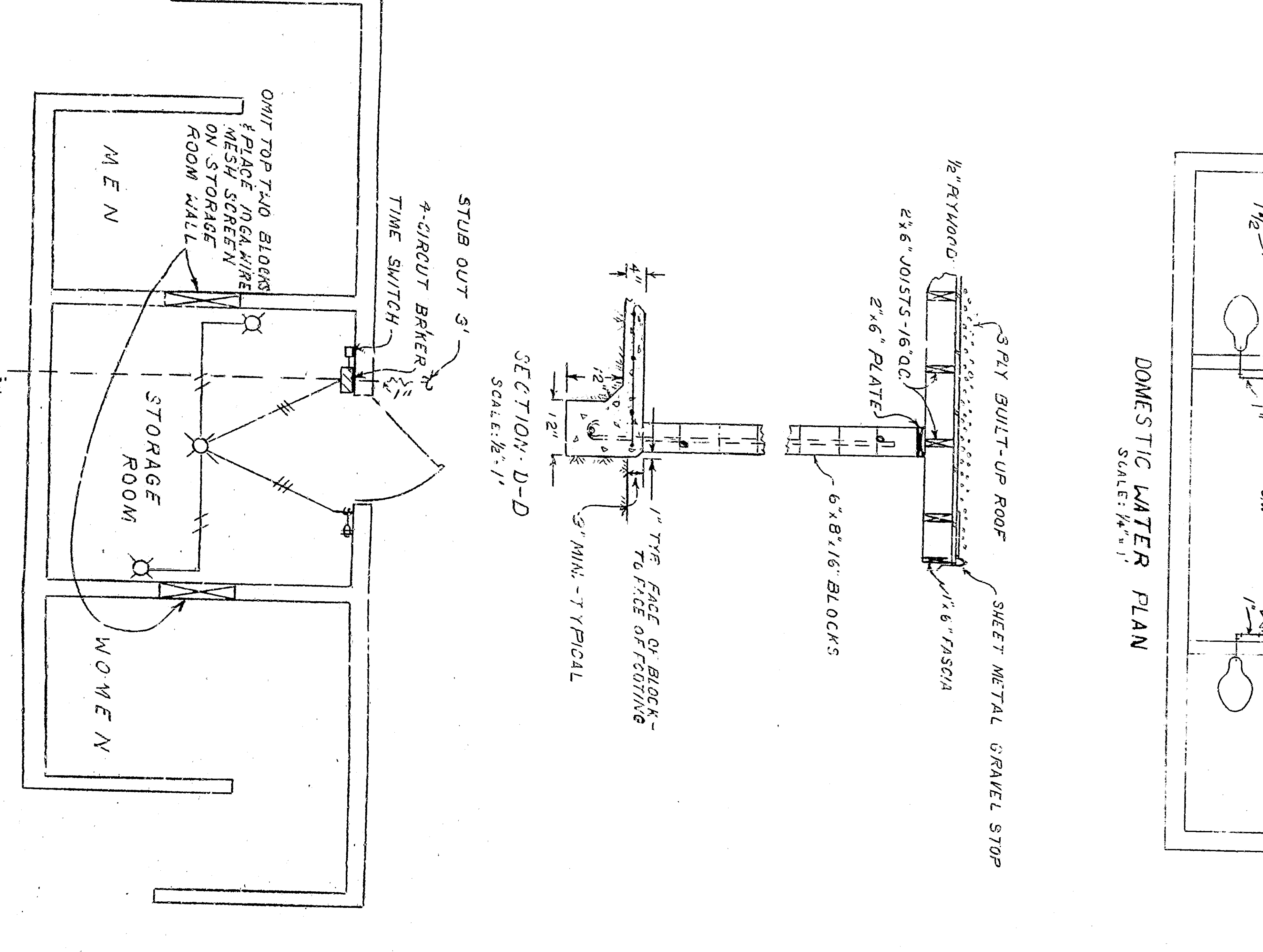
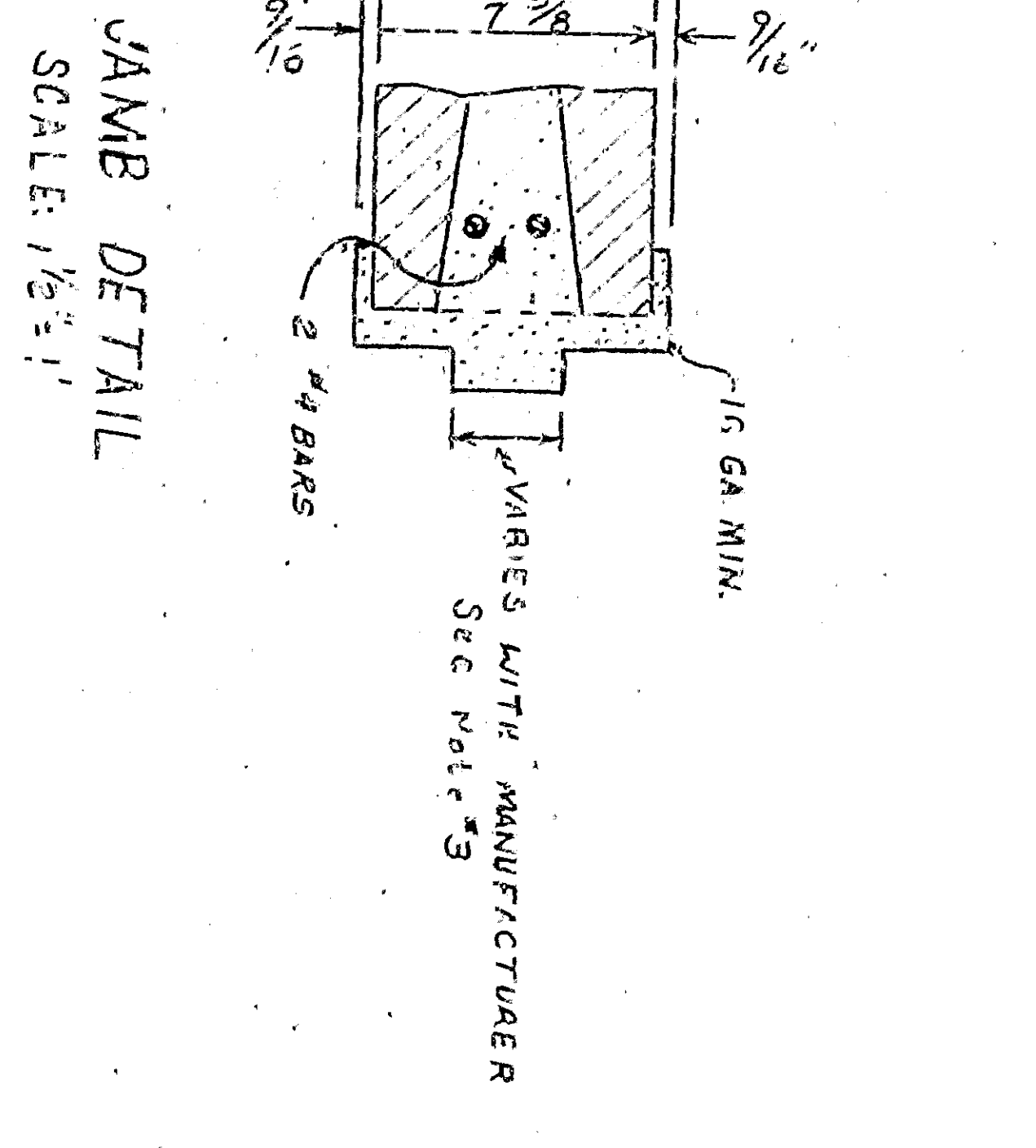
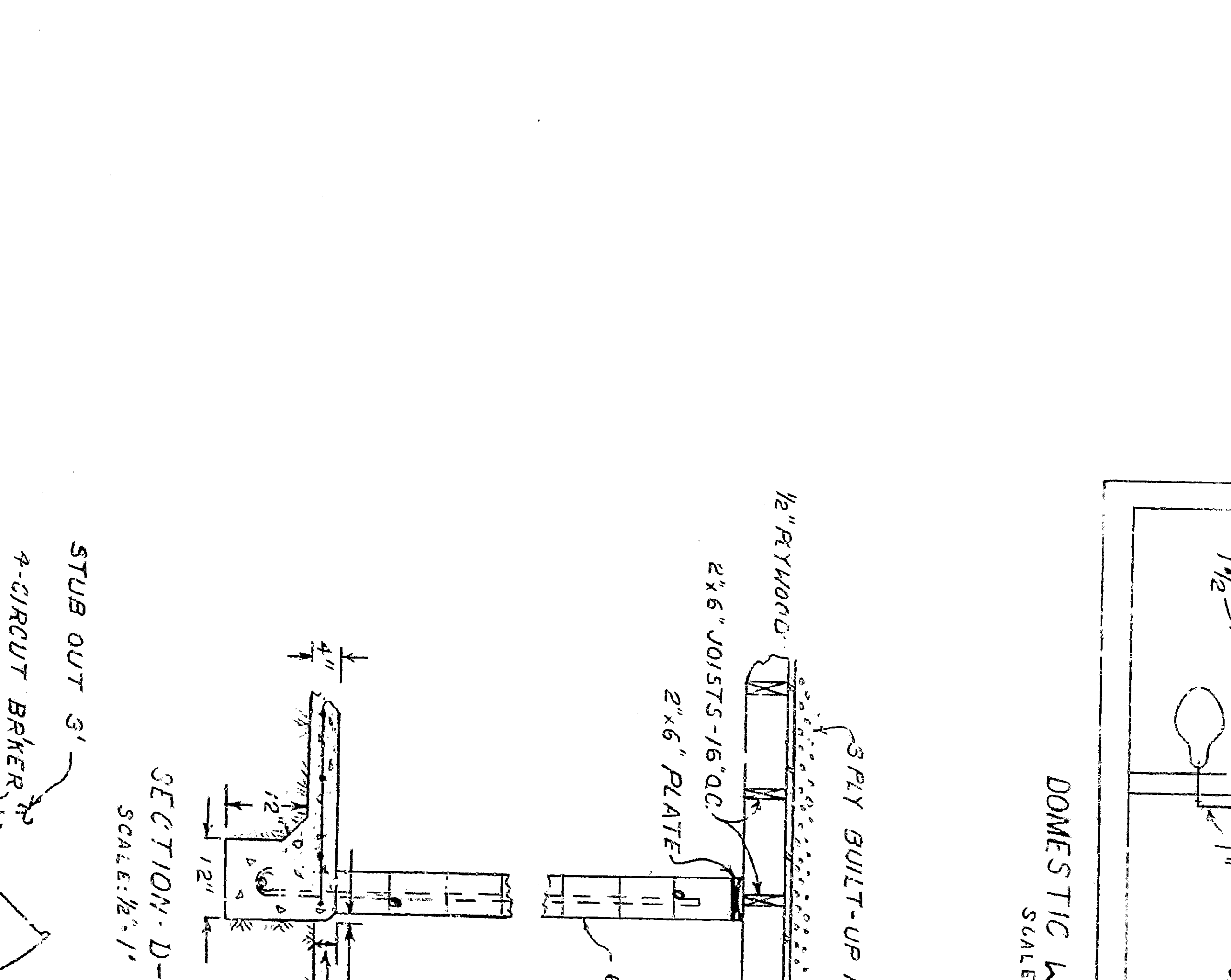
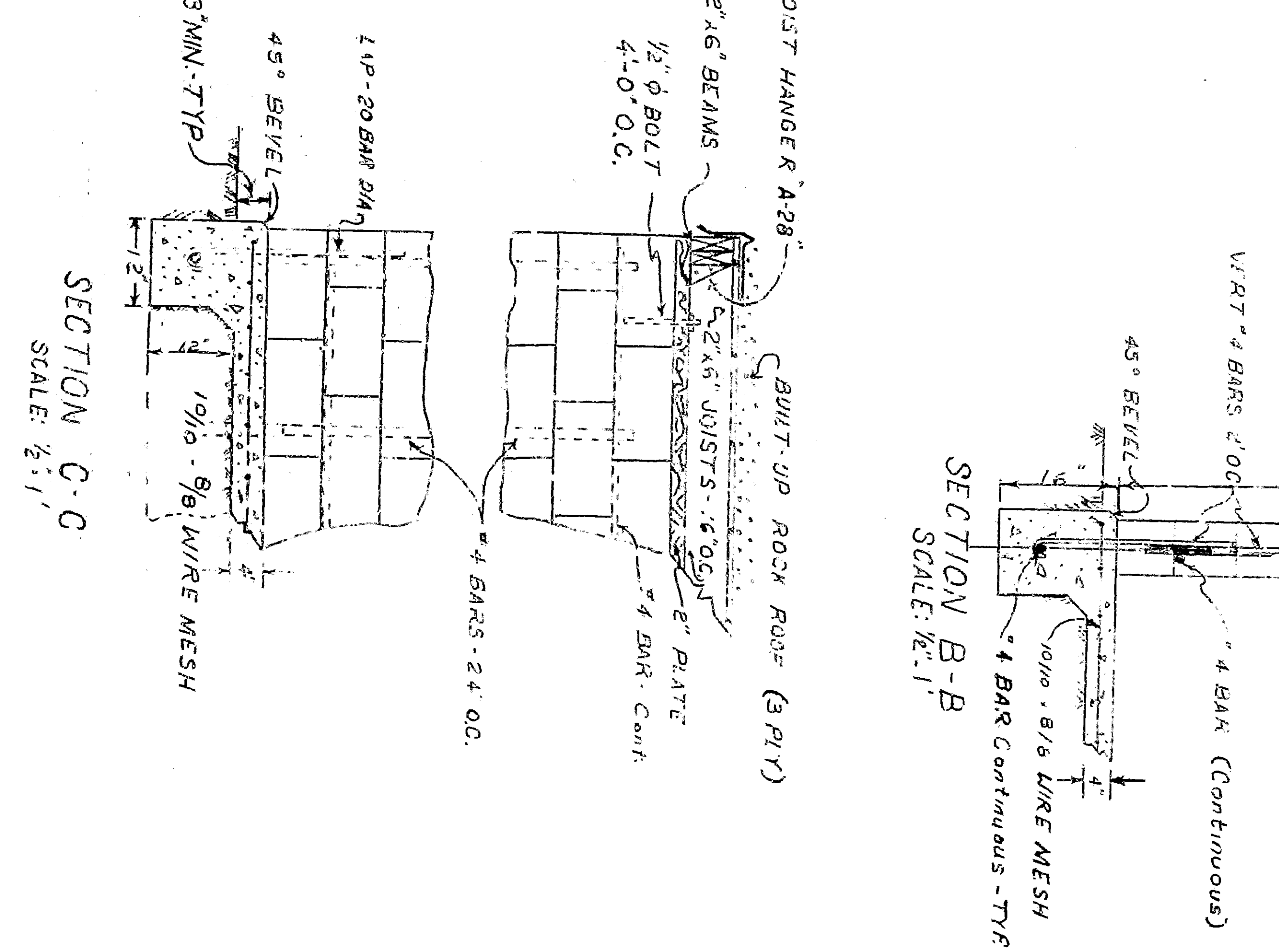


APPROVED: *[Signature]* 1953
 CITY OF SAN BERNARDINO
 DEPARTMENT OF ENGINEERING
 REST ROOMS
 MEADOWBROOK PARK



- LEGEND
- SCD Surface Clean Out
 - FD Floor Drain
 - LD Lavatory Drain
 - WC Water Closet
 - VTR Vent Through Roof
 - UR Urinal
 - W Waste Line
 - WL Waste Line
 - CL Cold Water
 - TI Trap
 - CT Cast Iron
 - VC Vitrified Clay Pipe
 - WC Vitrified Clay Pipe

- NOTES
1. All Plumbing Shall be in accordance with the Requirements of the National Plumbing Code
 2. Door & Door Frame Shall be Ordered from the Same Manufacturer as to be on Even & Flush Fit.
 3. Grout All Concrete Block Cells Which Contain Reinforcing with concrete.



APPROVED: *[Signature]* 1933
 CITY ENGINEER
 CITY OF SAN BERNARDINO
 DEPARTMENT OF ENGINEERING
 REST ROOMS
 MEADOWBROOK PARK

REVISIONS:
 NO. 1
 DATE
 BY
 DESCRIPTION